

CAYMAN ISLANDS



National Conservation Act, 2013

(Act 24 of 2013)

**NATIONAL CONSERVATION
(PROTECTED AREAS) ORDER, 2026**

(SL 23 of 2026)

Supplement No. 1 published with Legislation Gazette No. 26 dated 22nd April, 2026.

PUBLISHING DETAILS



CAYMAN ISLANDS**National Conservation Act, 2013****(Act 24 of 2013)****NATIONAL CONSERVATION (PROTECTED AREAS) ORDER, 2026****(SL 23 of 2026)****Arrangement of Paragraphs**

Paragraph	Page
1. Citation	5
2. Designation of protected areas	5
3. Maps of protected areas	5
4. Repeal of National Conservation (Protected Areas) Order, 2023	6
SCHEDULE 1	7
(paragraph 2)	7
1. Tarpon Lake National Park, Little Cayman	7
2. East Interior Nature Reserve, Little Cayman	7
3. Sand Cay Natural Feature, Grand Cayman	7
4. Duck Pond Little Cay Marine Park, Grand Cayman	7
5. Western Mangrove Cays Marine Park, Grand Cayman	7
6. Salina Nature Reserve, Grand Cayman	8
SCHEDULE 2	9
(paragraph 3)	9

CAYMAN ISLANDS**National Conservation Act, 2013****(Act 24 of 2013)****NATIONAL CONSERVATION (PROTECTED
AREAS) ORDER, 2026****(SL 23 of 2026)**

In exercise of the powers conferred by sections 7 and 50 of the National Conservation Act, 2013, the Cabinet, after consultation with the Council and adjoining land owners, makes the following Order —

Citation

1. This Order may be cited as the National Conservation (Protected Areas) Order, 2026.

Designation of protected areas

2. The areas of Crown land or Cayman waters that are specified in Schedule 1 are designated as protected areas.

Maps of protected areas

3. (1) The protected areas designated under paragraph 2 are set out in the maps in Schedule 2.
(2) The maps in Schedule 2 are guides to the approximate location of the boundaries of the protected areas.

Repeal of National Conservation (Protected Areas) Order, 2023

4. The *National Conservation (Protected Areas) Order, 2023* is repealed.



SCHEDULE 1

(paragraph 2)

Protected Areas

Tarpon Lake National Park, Little Cayman

1. The following areas of Tarpon Lake, Little Cayman —
 - (a) Block 83A Parcel 33 in its entirety; and
 - (b) Block 88A Parcel 30, in part, starting at a point latitude 19°41.112'N, longitude 80°1.524'W ('the starting point'), thence northwesterly to reach the parcel boundary of Block 88A Parcel 30 at a point latitude 19°41.195'N, longitude 80°1.575'W, thence along the parcel boundary of Block 88A Parcel 30, west, south and east for its entirety to reach the starting point.

East Interior Nature Reserve, Little Cayman

2. (1) The following areas of East Interior, Little Cayman —
 - (a) Block 91A Parcel 48 in its entirety; and
 - (b) Block 91A Parcel 25 in its entirety.
- (2) Any management plan for a protected area that includes Block 91A Parcel 48 shall maintain access to Block 91A Parcel 28 through Block 91A Parcel 48, for example the 30 ft wide land bridge which is currently located at 19°41.927'N, longitude 79°59.231'W.

Sand Cay Natural Feature, Grand Cayman

3. Sand Cay and surrounding marine area, being a 400 ft radius of the coordinate 19°15.775'N, 81°23.178'W, including Block 15E Parcel 110 in its entirety.

Duck Pond Little Cay Marine Park, Grand Cayman

4. Block 30A Parcel 1 in its entirety.

Western Mangrove Cays Marine Park, Grand Cayman

5. The following areas of Western Mangrove Cays and marine areas, Grand Cayman —
 - (a) Block 12C Parcel 362 in its entirety and surrounding marine area starting at a point latitude 19°19.993'N, longitude 81°21.946'W ('the starting point'), thence northeasterly along the coast to reach a point latitude 19°20.159'N, longitude 81°21.776'W, thence due east to reach a point

latitude 19°20.159'N, longitude 81°21.713'W, thence southwesterly to reach a point latitude 19°19.792'N, longitude 81°21.868'W, thence due west to reach a point latitude 19°19.792'N, longitude 81°21.943'W, thence northerly to reach a point latitude 19°19.943'N, longitude 81°21.929'W, thence northwesterly to reach the starting point;

- (b) Block 12C Parcel 366 in its entirety and surrounding marine area starting at a point latitude 19°19.703'N, longitude 81°22.011'W ('the starting point'), thence due east to reach a point latitude 19°19.703'N, longitude 81°21.921'W, thence due south to reach a point latitude 19°19.660'N, longitude 81°21.921'W, thence due west to reach a point latitude 19°19.660'N, longitude 81°22.011'W, thence due north to reach the starting point;
- (c) Block 12D Parcel 81 in its entirety, and surrounding marine area (including an unregistered mangrove cay) starting at a point latitude 19°19.583'N, longitude 81°22.134'W ('the starting point'), thence due east to reach a point latitude 19°19.583'N, longitude 81°22.054'W, thence southwesterly to reach a point latitude 19°19.453'N, longitude 81°22.107'W, thence southerly to reach a point latitude 19°19.426'N, longitude 81°22.120'W, thence southwesterly to reach a point on the boundary of Block 12D Parcel 81 at latitude 19°19.399'N, longitude 81°22.147'W, thence northwesterly along the coast and parcel boundaries to reach the starting point; and
- (d) Block 12D Parcel 111 in its entirety.

Salina Nature Reserve, Grand Cayman

- 6. Block 65A Parcel 46 in its entirety.



SCHEDULE 2

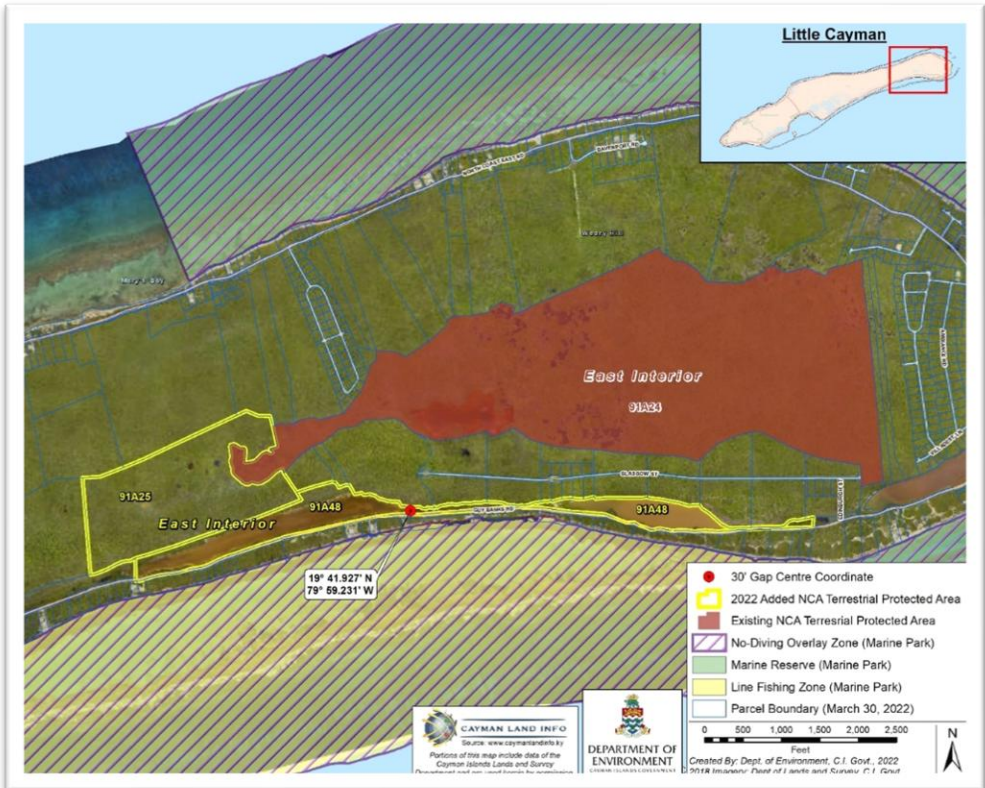
(paragraph 3)

Maps of Protected Areas

1. Tarpon Lake National Park, Little Cayman



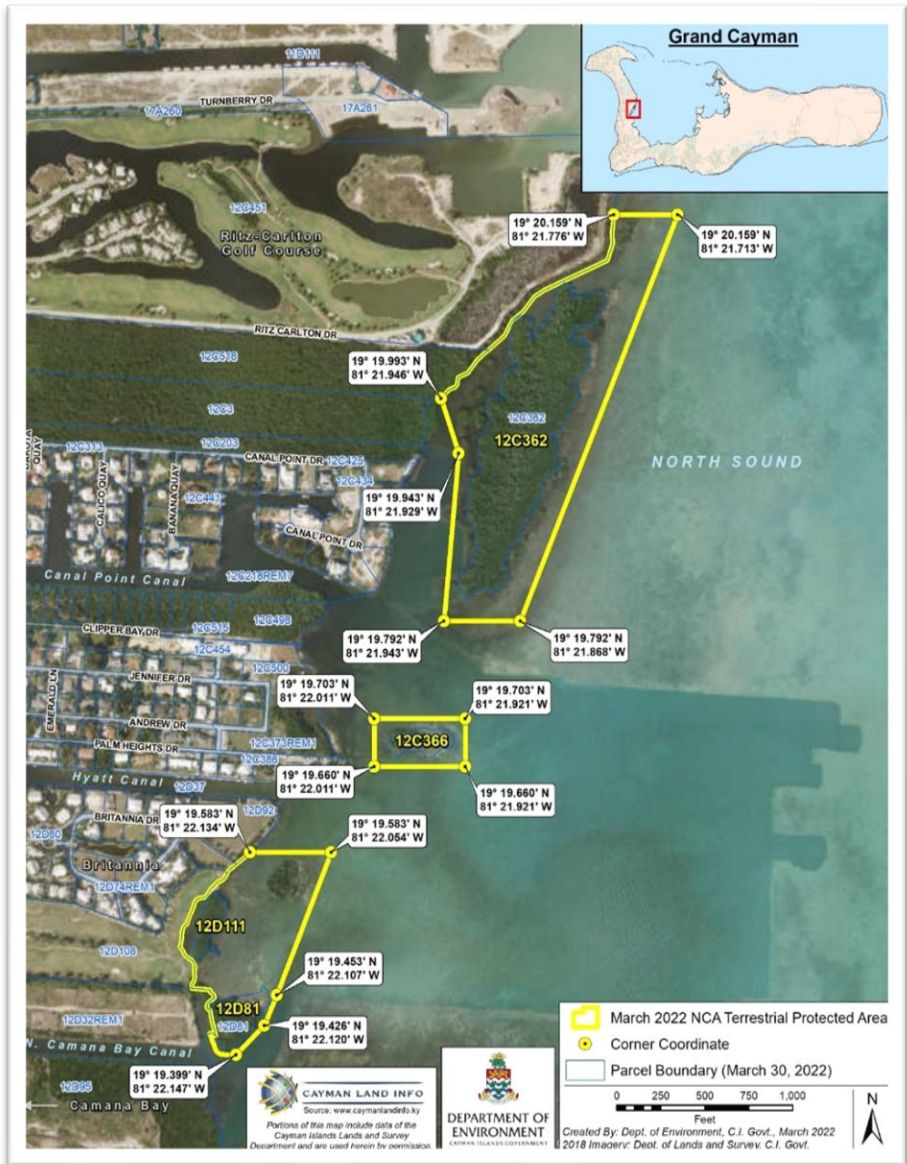
2. East Interior Nature Reserve, Little Cayman



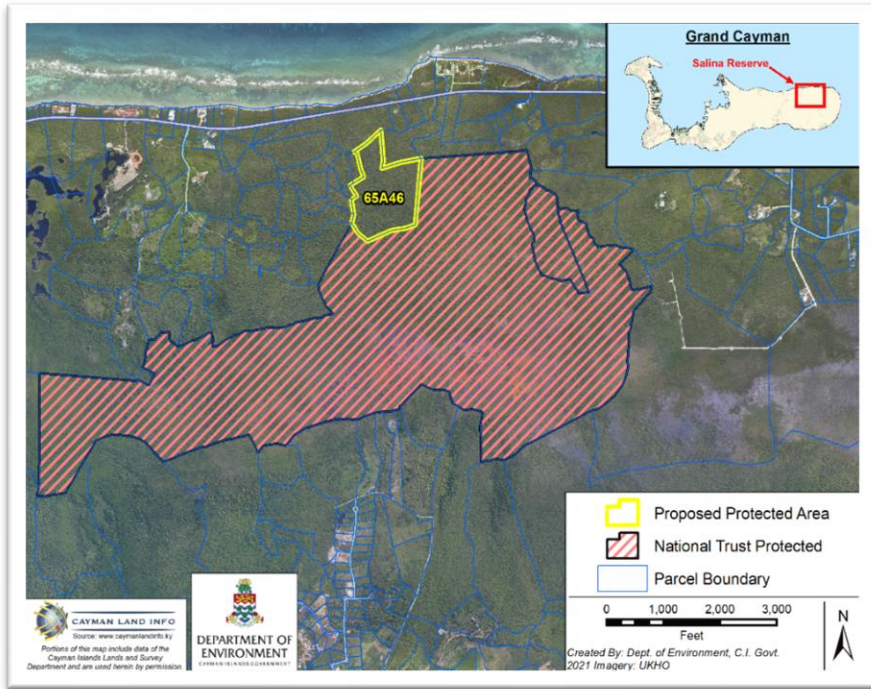
3. Sand Cay Natural Feature, Grand Cayman



5. Western Mangrove Cays Marine Park, Grand Cayman



6. Salina Nature Reserve, Grand Cayman



Made in Cabinet the 15th day of April, 2026.

Kim Bullings
Clerk of the Cabinet

